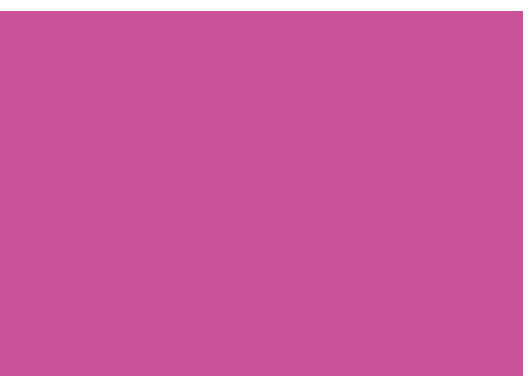


# NEWS 2018





# Contents

Range	Description	Series	Page
-------	-------------	--------	------

## MINIATURE

Snap-in IP67	Twin Distributors	720	6–7
Bajonett NCC	Female Panel Mount Connectors Fastened from Back Side	770	8–9

## POWER

HEC	Power Cable and Panel Mount Connectors	696	12–15
HEC	Hinged Cover	696	16–17
HEC	Litz Wire Sealing for 5 Pole Power Panel Mount Connectors	696	18–19
HEC	Protective Hose Fitting	696	20–21

## MEDICAL APPLICATIONS

ELC	Easy Locking Cable and Panel Mount Connector	570	24–25
-----	--	-----	-------

## AUTOMATION TECHNOLOGY Sensors & Actuators

M8	Cable Connector with 5 contacts, Moulded	718	28–29
M8	Cabel and Panel Mount Connectors with 12 Contacts	768 · 718	30–31
M12-A	Food & Beverage according to FDA	763, 765	32–33
M12-A	Male Panel Mount Connector, Positionable, Lockable	713 · 763	34–35

## AUTOMATION TECHNOLOGY Data Transmission & Power Supply

M12-X	Female Cable Connector and Lead-Through for Control Cabinets	825 · 876	38–39
M12-K	Power Cable and Panel Mount Connectors	814	40–41
M12-L	Power Cable and Panel Mount Connectors	813	42–43

## LED LIGHTS

LED	End Cap with Turned Thread	976	46–47
-----	----------------------------	-----	-------



# MINIATURE CONNECTORS

---



# Snap-in IP67

Series	720
Contacts	3, 5
Rated current	7 A – 5 A (per conductor)
Rated voltage	250 V – 125 V
Degree of protection	IP67
Contact plating	Au (gold)



## 720 Series • Twin Distributor

- Extension of the product range of 720 series
- Twin distributor: male connector on two female connectors
- 1:1 wiring
- 3 and 5 contacts
- IP67
- Available from 02/18 on



**Description**

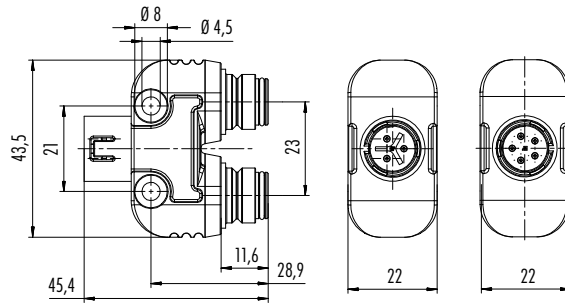
Twin distributor, male connector – 2 female connectors

**Drawing**

**Contacts**

**Ordering-No.**

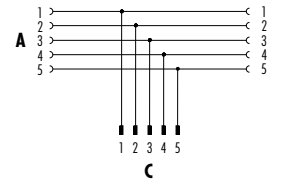
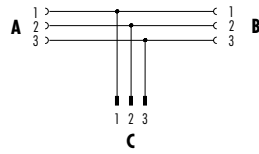
3	79 9179 000 03
5	79 9180 000 05



**Wirings**

**3 contacts**

**5 contacts**



# NCC

Series	770
Contacts	8
Rated current	2 A
Rated voltage	175 V
Degree of protection	IP67
Contact plating	Au (gold)
Termination	solder, dip solder



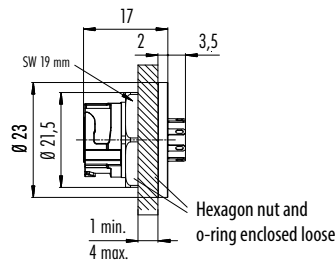
## 770 NCC Series • Female Panel Mount Connectors Fastened from Back Side

- Extension of application possibilities
- Front fastening
- IP67 in unmated condition
- Available from 03/18 on

### Description

Female panel mount connector, front fastened, solder

### Drawing



### Contacts

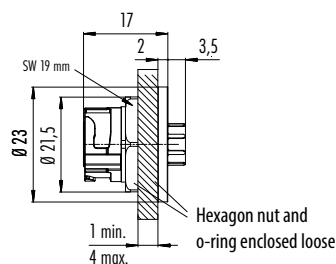
8

### Ordering-No.

09 0774 180 08



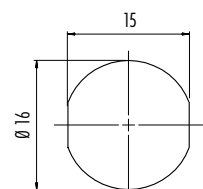
Female panel mount connector, front fastened, dip solder



8

09 0774 190 08

### Panel cut out









# POWER CONNECTORS

---



# HEC

Series	696
Contacts	4+PE
Cable outlet	7–17 mm
Rated current	32 A
Rated voltage	600 V
Degree of protection	IP68, IPX9K
Contact plating	Ag (silver)
Termination	crimp (2,5–6 mm <sup>2</sup> )



## 696 HEC Series • Power Cable and Panel Mount Connectors

- Extension of the product range of 696 HEC series
- Powerful 32 A, 600 V with the smallest construction
- Crimp termination 2,5–6 mm<sup>2</sup> <sup>1)</sup>
- UL approval
- CSA and VDE in preparation
- Available from now on



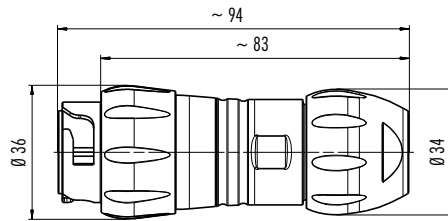
**Description**

**Drawing**

**Contacts**

**Ordering-No.<sup>1)</sup>**

Male cable connector

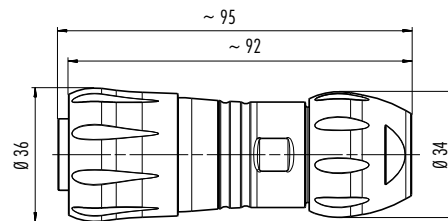


c us in preparation

4+PE

99 6489 000 05

Female cable connector

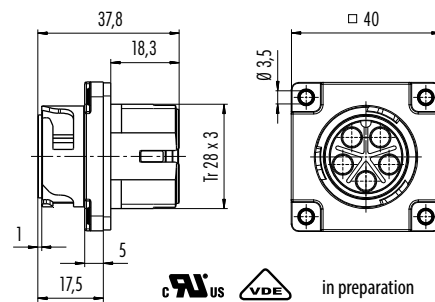


c us in preparation

4+PE

99 6490 000 05

Male panel mount connector

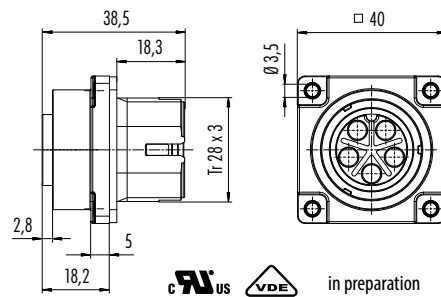


c us in preparation

4+PE

09 6491 000 05

Female panel mount connector



c us in preparation

4+PE

09 6492 000 05



<sup>1)</sup> Crimp contacts have to be ordered separately.

Description	Drawing	Contact-Ø	A	B	Wire gauge	Ordering-No. <sup>1)</sup>
Male contact, PU 100 pieces			2,2	3,3	2,5 mm <sup>2</sup>	61 1312 139
		3,6 mm	2,8	3,9	4 mm <sup>2</sup>	61 1310 139
			3,5	4,6	6 mm <sup>2</sup>	61 1285 139



Female contact, PU 100 pieces			2,2	3,3	2,5 mm <sup>2</sup>	61 1313 139
		3,6 mm	2,8	3,9	4 mm <sup>2</sup>	61 1311 139
			3,5	4,6	6 mm <sup>2</sup>	61 1286 139



**Ordering-No. <sup>1)</sup>**

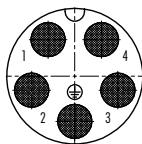
Crimping tool for power contacts	66 0005 000
----------------------------------	-------------



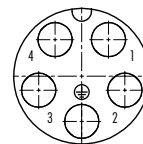
Extraction tool for power contacts	66 0012 001
------------------------------------	-------------



Male insert (mating side)	Female insert (mating side)
---------------------------	-----------------------------



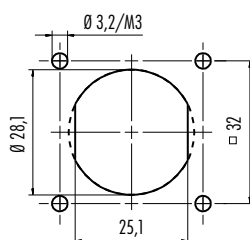
	X	Y
1	-3,82	5,26
2	-6,18	-2,01
3	6,18	-2,01
4	3,82	5,26
PE	0	-6,50



	X	Y
1	3,82	5,26
2	6,18	-2,01
3	-6,18	-2,01
4	-3,82	5,26
PE	0	-6,50

**Panel cut out**

Panel mount connectors



Alternative with flats



# HEC

Series	696
Contacts	4+PE, 8 (4 + 3+PE), 12
Rated current	32 A – 3A
Rated voltage	600 V – 60 V
Degree of protection	IP68, IPX9K
Contact plating	Ag (silver)
Termination	crimp



## 696 HEC Series · Hinged Cover

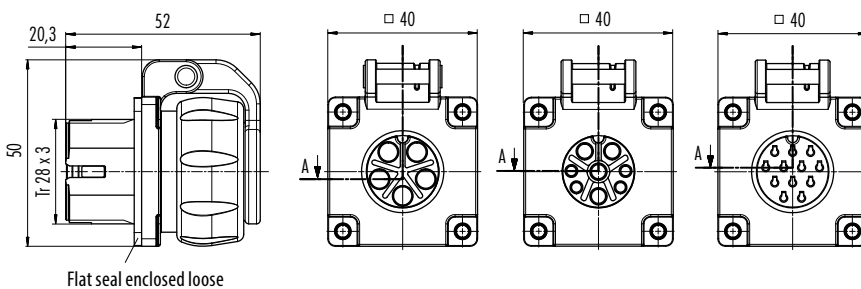
- Compact design: Female panel mount connector with hinged cover
- For all pole numbers (4+PE, 4 + 3+PE, 12)
- Easy and fast assembly
- IP68/IPX9K
- Available from 02/18 on

**Description**

Female panel mount connector, hinged cover



**Drawing**



**Contacts**

**Ordering-No.**

4+PE	09 6492 200 05
4+3+PE	09 6504 200 08
12	09 6520 200 12

Panel cut out see HEC POWER





# HEC

Series	696
Contacts	4+PE
Degree of protection	IP67



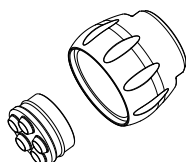
## 696 HEC Series · Litz Wire Sealing for 5 Pole Panel Mount Connectors

- Accessory for panel mount connectors of the 696 HEC series
- Set of sealings with pressing screw and ring for litz wire sealing
- Effective protection against humidity at the connection side
- Available from 02/18 on

**Description**

Sealing kit, IP67

**Drawing**



Seal for single wires  
Pressing screw

**Contacts**

4+PE

**Ordering-No.**

08 3274 000 000





# HEC

Series	696
Contacts	4+PE, 8 (4 + 3+PE), 12
Rated current	32 A – 3A
Rated voltage	600 V – 60 V
Contact plating	Ag (silver)
Termination	crimp



## 696 HEC Series • Protective Hose Fitting

- Protects cable and single wires of external influences
- Available from 03/18 on
- Also available for retrofitting

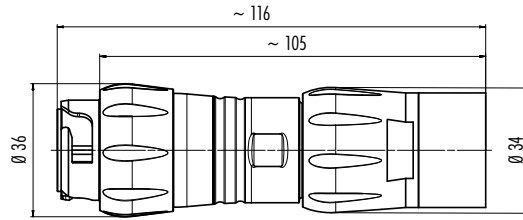


**Description**

Male cable connector, protective hose fitting



**Drawing**

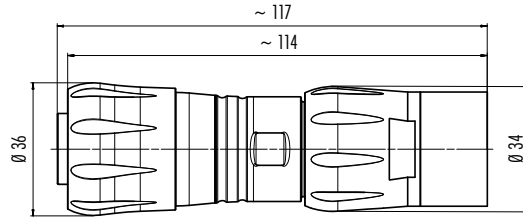


**Contacts**

**Ordering-No.**

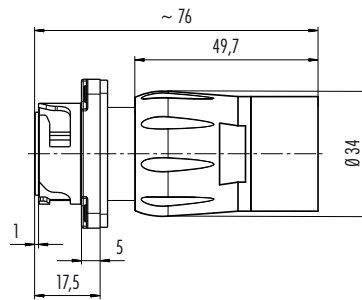
4+PE	99 6489 100 05
4+3+PE	99 6501 100 08
12	99 6517 100 12

Female cable connector, protective hose fitting



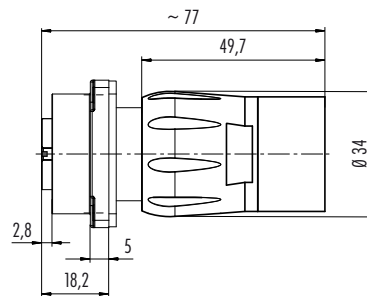
4+PE	99 6490 100 05
4+3+PE	99 6502 100 08
12	99 6518 100 12

Male panel mount connector, protective hose fitting



4+PE	09 6491 100 05
4+3+PE	09 6503 100 08
12	09 6519 100 12

Female panel mount connector, protective hose fitting

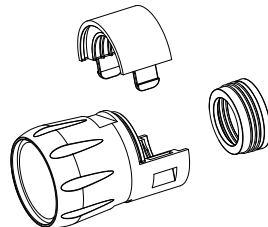


4+PE	09 6492 100 05
4+3+PE	09 6504 100 08
12	09 6520 100 12

Protective hose fitting

**Ordering-No.**

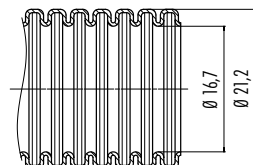
08 0056 000 000



Pressing screw,  
Securing clip,  
Hose seal,  
are enclosed loose

Protective hose fitting, 50 m

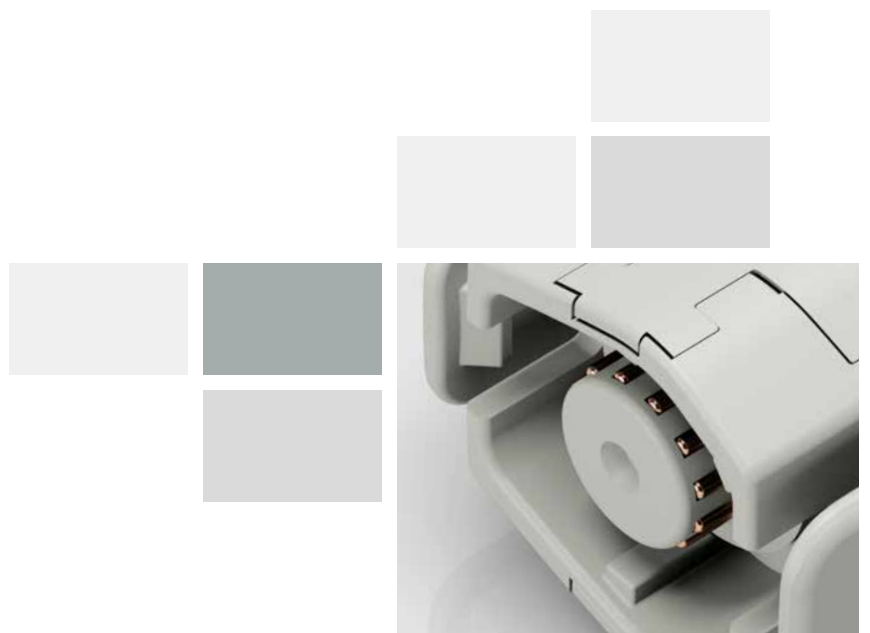
08 0071 050 000





# CONNECTORS FOR MEDICAL APPLICATIONS

---



# ELC

Series	570
Contacts	12
Wire gauge	0,25 mm <sup>2</sup>
Limit temperature	-25°C – +85°C
Rated current	2 A
Rated voltage	150 V
Pollution degree	2
Degree of protection	IP54
Contact plating	Au (gold)
Mechanical operation	>5000 Mating cycles
Material of housing	PA66



## 570 ELC Series • Easy Locking Connector

- Intuitive locking system with snap hooks
- Mating position is clearly set through shape of mating area and prevents from mismatching
- Mechanical resistance with > 5000 mating cycles
- Female panel mount connector provides protection of intrusion of liquids, water splash and of touching the contacts
- Available from 04/18 on





**Description**

**Drawing**

**Contacts**

**Cable outlet 4–6 mm**

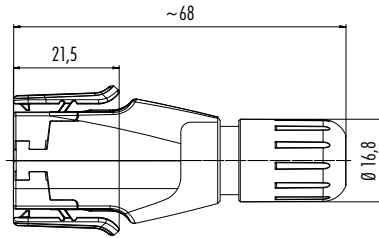
**Cable outlet 6–8 mm**

Male cable connector

12

99 1721 002 12

99 1721 000 12



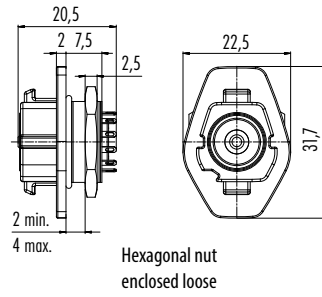
Female panel mount connector, solder

**Contacts**

**Ordering-No.**

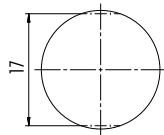
12

09 1724 000 12

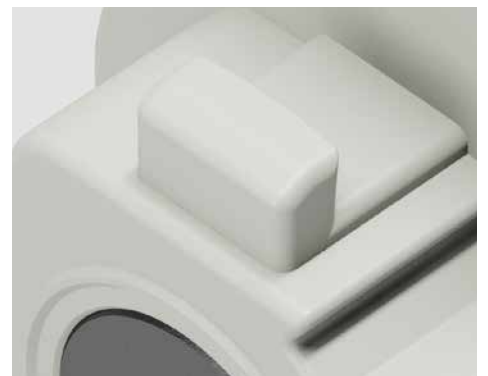
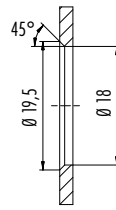


**Panel cut out**

Alternative with flats



Mounting wall





## Sensors & Actuators



# M8

Series	718
Contacts	5
Thread	M8
Rated current	3A
Rated voltage	30 V
Degree of protection	IP67
Contact plating	Au (gold)
Termination	PUR/PVC cable



## M8 Cable Connectors with 5 Contacts, Moulded

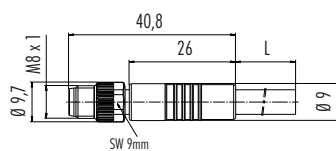
- Male or female cable connector, moulded
- Straight version
- Standard cable length 2 m and 5 m
- Configurable according to customer requirements
- Available from now on

### Description

Male cable connector, moulded, screw version M8 x 1

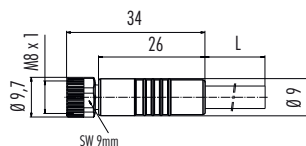


### Drawing



Contacts	Cable jacket	Cable length	Ordering-No.
5	PVC	2 m	77 3405 0000 20005-0200
		5 m	77 3405 0000 20005-0500
	PUR	2 m	77 3405 0000 50005-0200
		5 m	77 3405 0000 50005-0500

Female cable connector, moulded, screw version M8 x 1



5	PVC	2 m	77 3406 0000 20005-0200
		5 m	77 3406 0000 20005-0500
	PUR	2 m	77 3406 0000 50005-0200
		5 m	77 3406 0000 50005-0500



# M8

Series	768 · 718
Contacts	12
Thread	M8
Rated current	1A
Rated voltage	30 V
Degree of protection	IP67
Contact plating	Au (gold)
Termination	PUR cable/single wires



## M8 Cable and Panel Mount Connectors with 12 contacts

- Male or female cable connector, moulded
- Panel mount connectors with single wires
- Straight version
- Standard cable length 2 m and 5 m
- Standard length of single wires is 200 mm
- Configurable according to customer requirements
- Available from 03/18 on



**Description**

**Drawing**

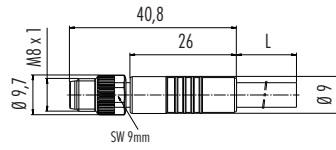
**Contacts**

**Cable jacket**

**Cable length**

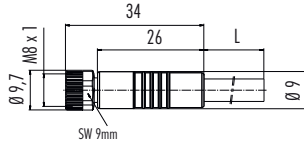
**Ordering-No.**

Male cable connector, moulded, screw version M8 x 1



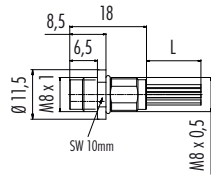
12	PUR	2 m	77 3405 0000 50012-0200
		5 m	77 3405 0000 50012-0500

Female cable connector, moulded, screw version M8 x 1



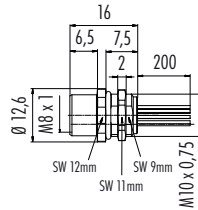
12	PUR	2 m	77 3406 0000 50012-0200
		5 m	77 3406 0000 50012-0500

Male panel mount connector with single wires



<b>Contacts</b>	<b>Ordering-No.</b>
12	76 6019 0118 00012-0200

Female panel mount connector with single wires



12	76 6218 1118 00012-0200
----	-------------------------



# M12-A

Series	763, 765
Contacts	3, 4, 5, 8, 12
Coding	A
Thread	M12 x 1
Rated current	4 A, 2 A, 1,5 A
Rated voltage	250 V, 125 V, 60 V
Degree of protection	IP69K
Contact plating	Au (gold)
Termination	moulded
Cable	TPVHF



## M12 A-Coded Connectors for Food and Beverage Acc. to FDA

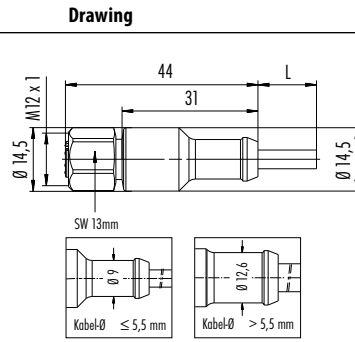
- For applications in the field of food and pharmaceutical as well as chemical industry
- Certification according to Ecolab
- According to FDA 21 CFR
- Stainless steel locking rings (V4A)
- Protection degree IP69K
- Type M12 in all pole numbers
- Attractive design in grey
- Available from now on

Description	Drawing	Contacts	Cod.	Cable length	Ordering-No. (acc. to FDA)
Male cable connector, moulded		3	A	2 m	77 3729 0000 40403-0200
				5 m	77 3729 0000 40403-0500
		4		2 m	77 3729 0000 40404-0200
				5 m	77 3729 0000 40404-0500
		5		2 m	77 3729 0000 40405-0200
				5 m	77 3729 0000 40405-0500
		8		2 m	77 3729 0000 40908-0200
				5 m	77 3729 0000 40908-0500
		12		2 m	77 3729 0000 40912-0200
				5 m	77 3729 0000 40912-0500
Male angled connector, moulded		3	A	2 m	77 3727 0000 40403-0200
				5 m	77 3727 0000 40403-0500
		4		2 m	77 3727 0000 40404-0200
				5 m	77 3727 0000 40404-0500
		5		2 m	77 3727 0000 40405-0200
				5 m	77 3727 0000 40405-0500
		8		2 m	77 3727 0000 40908-0200
				5 m	77 3727 0000 40908-0500
		12		2 m	77 3727 0000 40912-0200
				5 m	77 3727 0000 40912-0500



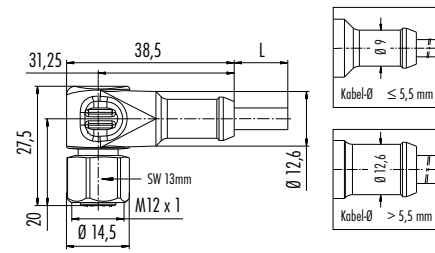
**Description**

Female cable connector, moulded



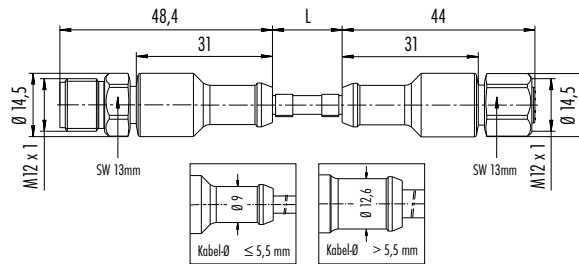
Contacts	Cod.	Cable length	Ordering-No. (acc. to FDA)
3		2 m	77 3730 0000 40403-0200
		5 m	77 3730 0000 40403-0500
4		2 m	77 3730 0000 40404-0200
		5 m	77 3730 0000 40404-0500
5	A	2 m	77 3730 0000 40405-0200
		5 m	77 3730 0000 40405-0500
8		2 m	77 3730 0000 40908-0200
		5 m	77 3730 0000 40908-0500
12		2 m	77 3730 0000 40912-0200
		5 m	77 3730 0000 40912-0500

Female angled connector, moulded



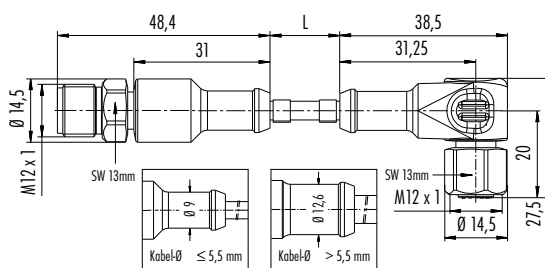
3		2 m	77 3734 0000 40403-0200
		5 m	77 3734 0000 40403-0500
4		2 m	77 3734 0000 40404-0200
		5 m	77 3734 0000 40404-0500
5	A	2 m	77 3734 0000 40405-0200
		5 m	77 3734 0000 40405-0500
8		2 m	77 3734 0000 40908-0200
		5 m	77 3734 0000 40908-0500
12		2 m	77 3734 0000 40912-0200
		5 m	77 3734 0000 40912-0500

Connecting cable, Male cable connector M12 x 1 – Female cable connector M12 x 1



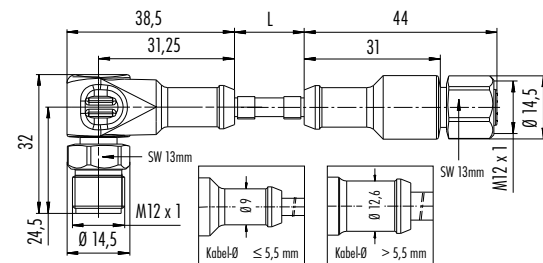
3		2 m	77 3730 3729 40403-0200
		5 m	77 3730 3729 40403-0500
4		2 m	77 3730 3729 40404-0200
		5 m	77 3730 3729 40404-0500
5	A	2 m	77 3730 3729 40405-0200
		5 m	77 3730 3729 40405-0500
8		2 m	77 3730 3729 40908-0200
		5 m	77 3730 3729 40908-0500
12		2 m	77 3730 3729 40912-0200
		5 m	77 3730 3729 40912-0500

Connecting cable, Male cable connector M12 x 1 – Female angled connector M12 x 1



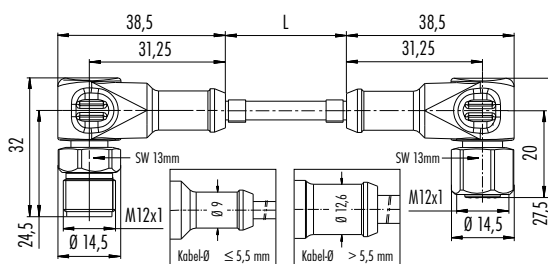
3		2 m	77 3734 3729 40403-0200
		5 m	77 3734 3729 40403-0500
4		2 m	77 3734 3729 40404-0200
		5 m	77 3734 3729 40404-0500
5	A	2 m	77 3734 3729 40405-0200
		5 m	77 3734 3729 40405-0500
8		2 m	77 3734 3729 40908-0200
		5 m	77 3734 3729 40908-0500
12		2 m	77 3734 3729 40912-0200
		5 m	77 3734 3729 40912-0500

Connecting cable, Male angled connector M12 x 1 – Female cable connector M12 x 1



3		2 m	77 3730 3727 40403-0200
		5 m	77 3730 3727 40403-0500
4		2 m	77 3730 3727 40404-0200
		5 m	77 3730 3727 40404-0500
5	A	2 m	77 3730 3727 40405-0200
		5 m	77 3730 3727 40405-0500
8		2 m	77 3730 3727 40908-0200
		5 m	77 3730 3727 40908-0500
12		2 m	77 3730 3727 40912-0200
		5 m	77 3730 3727 40912-0500

Connecting cable, Male angled connector M12 x 1 – Female angled connector M12 x 1



3		2 m	77 3734 3727 40403-0200
		5 m	77 3734 3727 40403-0500
4		2 m	77 3734 3727 40404-0200
		5 m	77 3734 3727 40404-0500
5	A	2 m	77 3734 3727 40405-0200
		5 m	77 3734 3727 40405-0500
8		2 m	77 3734 3727 40908-0200
		5 m	77 3734 3727 40908-0500
12		2 m	77 3734 3727 40912-0200
		5 m	77 3734 3727 40912-0500

# M12-A

Series	763
Contacts	4, 5, 8
Coding	A
Thread	M12
Rated current	4 A (3 A UL), 1,5 A (2A UL)
Rated voltage	250 V, 60 V, 30 V
Degree of protection	IP68 in mated condition
Contact plating	Au (gold)
Termination	single wires AWG24/7



## M12 Male Panel Mount Connector, Positionable, Lockable

- Square flange consisting of a separate housing and contact carrier
- Separate processing of housing and wires for subsequent mounting possible
- AWG24/7 wires ensure a fast and easy (direct) processing
- Different cable outlet directions for angled connectors are possible due to the variable positioning of the coding
- Available from 11/17 on

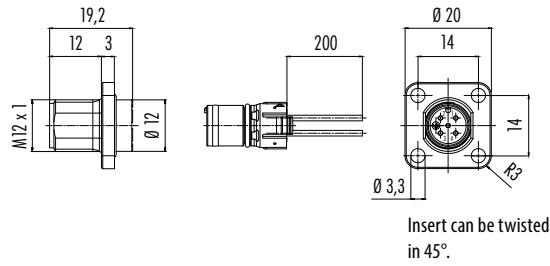


**Description**

Male panel mount connector, rectangular flange, positioning possible, lockable



**Drawing**



Contacts	Coding	Ordering-No.
4		99 3433 100 04
5	A	99 3443 100 05
8		99 3483 100 08

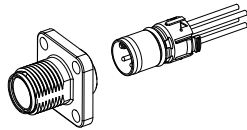
**Assembly instruction**

**Assembly:**

1. Insert the insert into the housing in the desired mounting position until it locks securely into place.

**Disassembly:**

1. Press the locking lever.
2. Simultaneously, without damaging the contacts, push out the contact body from plug-in side with a suitable object.

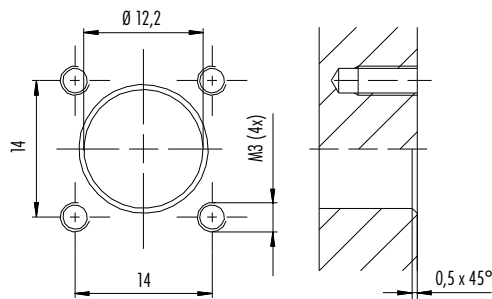


**Note:**

Please do not pull on single wires during disassembly!

**Panel cut out**

Panel mount connectors square flange



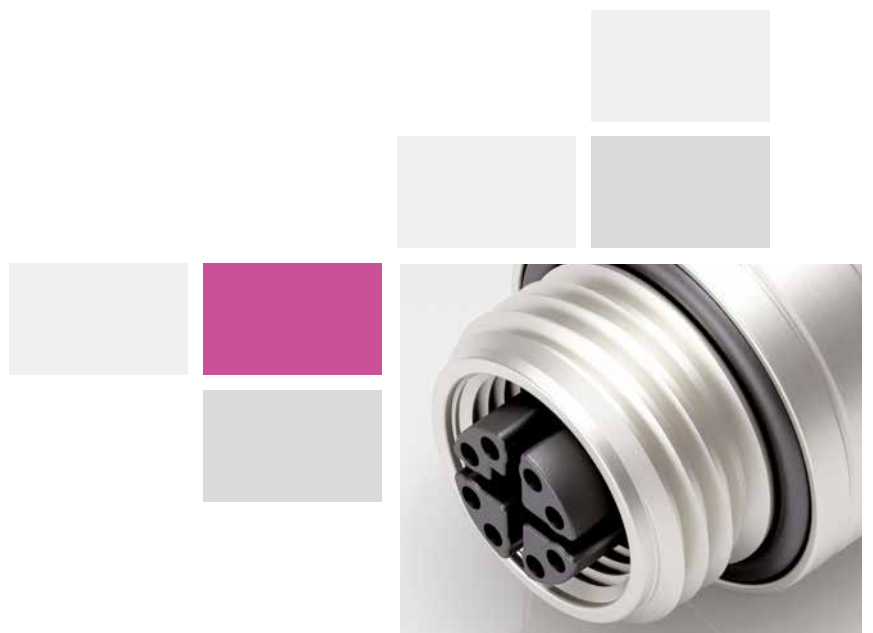
**Requirements for Degree of protection IP67:**

1. Use of sealing, Ordering-No. 16 0959 000
2. M3 thread (4x) sealed as a threaded blind holes or screw heads





## Data Transmission & Power Supply



# M12-X

Series	825
Contacts	8
Coding	X
Thread	M12 x 1
Rated current	0,5 A
Rated voltage	50 V AC, 60 V DC
Degree of protection	M12-X IP67, RJ45 IP20
Contact plating	Au (gold)
Termination	M12-X, RJ45

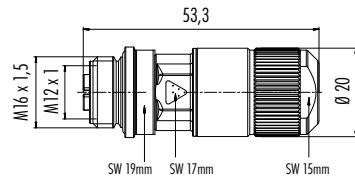


## M12 X-Coded Female Cable Connector on Adapter RJ45 and Lead-Through for Control Cabinets

- Extension of the product range of M12-X
- Data transmission 4-paired up to 10 Gbit/s
- According to DIN IEC 61076-2-109
- Lead-through for control cabinet/Adapter M12-X female connector on RJ45
- Straight and angled
- Available from 03/18 on

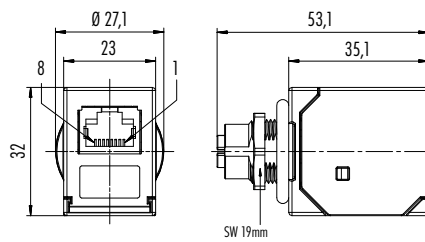


Description	Drawing	Contacts	Cable outlet	Ordering-No.
Female cable connector, IDT connection, shieldable		8	5,5–9 mm	99 3788 810 08



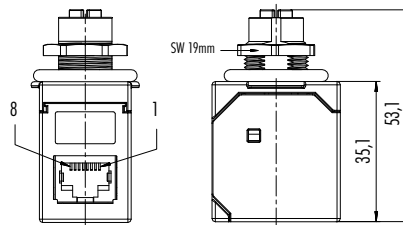
Contacts	Ordering-No.
8	09 5287 00 08

Adapter, lead-through for control cabinet, M12-X female – RJ45 straight



Contacts	Ordering-No.
8	09 5287 00 08

Adapter, lead-through for control cabinet, M12-X female – RJ45 angled



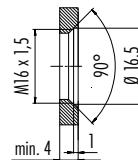
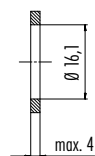
Contacts	Ordering-No.
8	09 5288 00 08

**Panel cut out**

Female cable connector

Use in panel mount connector with nut M16 x 1,5

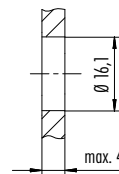
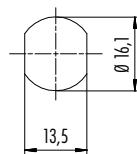
Use in panel mount connector with cutted thread



Adapter, lead-through for control cabinet

with anti-rotation device

without anti-rotation device



# M12-K

Series	814
Contacts	4+PE
Coding	K
Thread	M12 x 1
Rated current	12 A
Rated voltage	630 V AC
Degree of protection	IP67/IP68 in mated condition
Contact plating	Au (gold)
Termination	single wires AWG 16
Standard	DIN IEC 61076-2-111



## M12 K-Coded, Field Wire-Able Power Cable & Panel Mount Connectors

- Pre-assembled male and female panel mount connector for power supply
- K-coding for AC power supply
- UL PVC single wires AWG 16 Style 1007/1569
- Standard wire length is 200 mm. Other lengths upon request
- UL- and VDE approval are in preparation
- Available from 04/18 on





**Description**

**Drawing**

**Contacts**

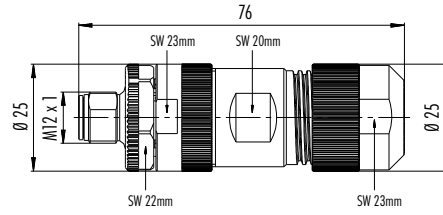
**Cod.**

**Cable outlet**

**Ordering-No.**

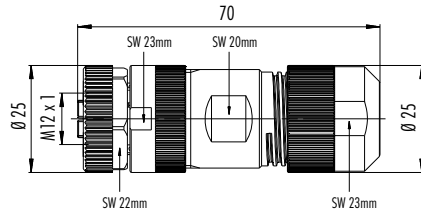
Male cable connector, Power, K-Coding, screw clamp termination

4+PE K 8-13 mm 99 0699 29 05



Female cable connector, Power, K-Coding, screw clamp termination

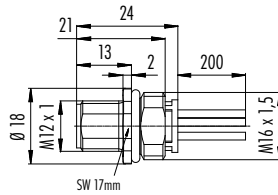
4+PE K 8-13 mm 99 0700 29 05



Male panel mount connector with single wires, Power, K-Coding

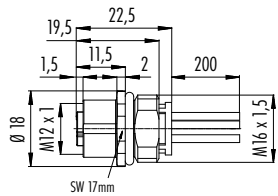
**Contacts Cod. Ordering-No.**

4+PE K 09 0701 700 05



Female panel mount connector with single wires, Power, K-Coding

4+PE K 09 0702 700 05



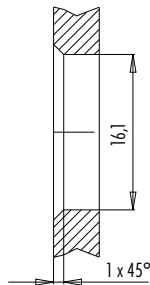
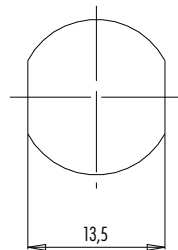
**Panel cut out**

Panel mount connectors

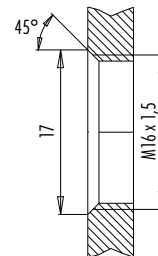
With flats as anti-rotation device

With bore hole

With thread to screw in



Alternative



# M12-L

Series	813
Contacts	4+FE
Coding	L
Thread	M12 x 1
Rated current	16 A
Rated voltage	63 V DC
Degree of protection	IP67/IP68 in mated condition
Contact plating	Au (gold)
Termination	single wires AWG 16
Standard	DIN IEC 61076-2-111



## M12 L-Coded, Field Wire-Able Power Cable & Panel Mount Connectors

- Pre-assembled male and female panel mount connector for power supply
- L-Coding for DC power supply Profinet-compliant
- UL PVC single wires AWG 16 Style 1007/1569
- Standard wire length is 200 mm. Other lengths upon request
- UL- and VDE approval are in preparation
- Available from 11/17 on



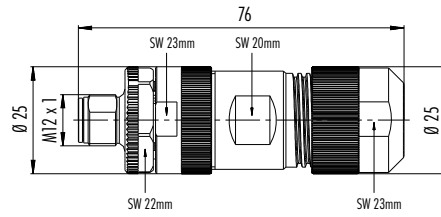
**Description**

**Drawing**

**Contacts Cod. Cable outlet Ordering-No.**

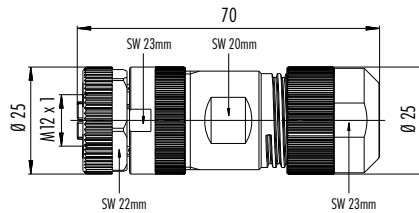
Male cable connector, Power, L-Coding, screw clamp termination

4+FE L 8-13 mm 99 0639 29 05



Female cable connector, Power, L-Coding, screw clamp termination

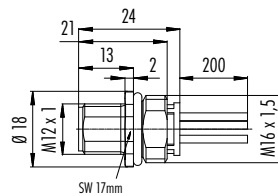
4+FE L 8-13 mm 99 0640 29 05



Male panel mount connector with single wires, Power, L-Coding

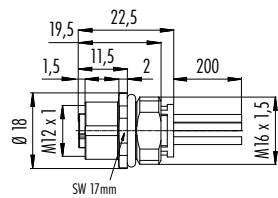
**Contacts Cod. Ordering-No.**

4+FE L 09 0641 700 05



Female panel mount connector with single wires, Power, L-Coding

4+FE L 09 0642 700 05



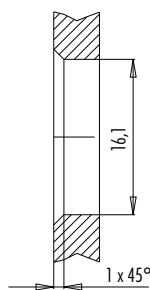
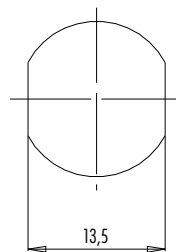
**Panel cut out**

Panel mount connectors

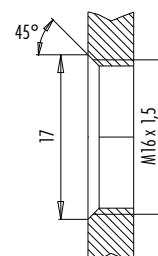
With flats as anti-rotation device

With bore hole

With thread to screw in



Alternativ





# LED LIGHTS

---



# LED

Series	976
Contacts	4
Thread	M12 x 1
Length	250 mm, 358 mm, 412 mm
Rated power	4,8 W, 7,68 W, 9,12 W
Rated voltage	24 V
Degree of protection	IP67/IP68/IP69K
Lightcolour	4000 K
Durability	50.000 h



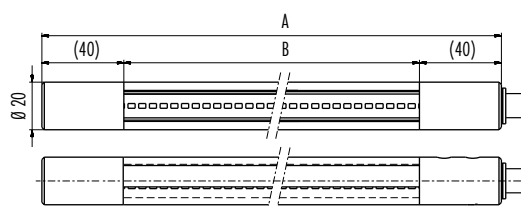
## binder LED – End Cap with Turned Thread

- Protection degree IP67, IP68 and IP69K
- Three different lengths
- Stainless steel version
- M12 connection system
- Round and compact design
- Available from now on

### Description

LED-Light, End cap stainless steel

### Drawing



### Contacts

4

### Material End cap

Stainless steel (V2A)

### Ordering-No.

28 1300 000 04

28 1301 000 04

28 1302 000 04



**Franz Binder GmbH & Co.  
Elektrische Bauelemente KG**

Rötelstraße 27  
74172 Neckarsulm  
Germany

Tel. +49 7132 325-0  
Fax +49 7132 325-190

[vk@binder-connector.de](mailto:vk@binder-connector.de)  
[www.binder-connector.de](http://www.binder-connector.de)